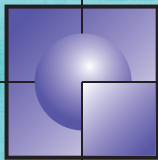




2020 SEASON

BelfryMusicTheatre.com | 262.394.6460



IMAGETEC®

Harmonize

Your Office Workflow

Let IMAGETEC L.P. help you select the right instruments for your office.

We partner with trusted brands like HP, Dell, and Lenovo to supply computers, laptops, servers, multifunction printers and document management and IT consulting.

Our Managed IT Services can make sure your equipment works seamlessly and keep your workflow from falling flat.

Let us help your office
work in perfect harmony

www.imagetec.com
800.870.0225
sales@imagetec.com

| | |
|------------|--------------|
| McHenry | Chicago |
| Rosemont | Lincolnshire |
| Naperville | Tinley Park |



NAVIGATING THE PLAYBILL TABLE OF CONTENTS



WELCOME TO THE 2020 SEASON

| | |
|---------------------------------|-------|
| Our Mission | 5 |
| Enjoy Your Visit | 7 |
| Seating Chart | 11 |
| 2020 Season Schedule | 12-19 |
| Belfry History Highlights | 20-21 |
| Be A Volunteer | 22 |
| Volunteer Thank You | 23 |
| Thank You | 25 |
| Membership Opportunities | 27 |
| Belfry Foundation | 32 |
| Belfry Preservation Fund | 33 |

— SUPPORT THE — **ADVERTISERS** THAT SUPPORT US!

The Belfry Music Theatre is so fortunate to have the support of our advertisers. Please thank them when you can, and give them the support of your business.

ADVERTISE IN THIS PLAYBILL

For more information, email
support@belfrymusictheatre.com

- One fee takes your message through one FULL season
- Patrons visit from the southern Wisconsin and Chicagoland areas



Cafe Calamari

ITALIAN CUISINE - STEAKS / SEAFOOD



ITALIAN. SEAFOOD. ATMOSPHERE.

CAFECALAMARI.COM

262.245.9665

OPEN DAILY AT 5 P.M.



Cafe Calamari

PRIVÁTO

PRIVATE EVENTS

The perfect place for your next event.

privatoprivateevents.com

Featuring Live Music Thursday Nights!



Burgers. Smokehouse Items.
Homemade Pizzas. Signature Drinks.

HARPOONWILLIES.COM 262.245.6906

daily at 11:30am Saturday & Sunday at 11am

Highway 67 & Geneva St., Williams Bay, WI • Open 7 Days a Week at 5 p.m.



OUR MISSION

The Belfry Music Theatre desires to continue its legacy to engage, inspire and entertain our community by presenting professional productions for the entire family that enrich and have a meaningful impact in their lives to build memories throughout the generations.

We will offer a highly varied program of musical theatre, drama, comedy, children's theatre and art exhibits in our renovated historic facility utilizing state of the art lighting and sound to enhance the shared experience of live performances.

We will offer a supportive working environment that expects excellence from the artists, staff and volunteers with whom we work and we will work to restore our legacy as a leading organization in the arts community of the Geneva Lakes area.

We will uphold our covenant by being faithful stewards of the public trust and the God granted resources entrusted to us.

We will support other community organizations to assist them in accomplishing their goals to faithfully serve the members of our community.

We will continually strive to Exceed Your Entertainment Expectations.

The Belfry Music Theatre

For more information, visit BelfryMusicTheatre.com or call 262.394.6460.



OPEN DAILY: 11 AM TO CLOSE

BREAKFAST: SAT. & SUN. 8 AM

BLOODY MARY BAR: SAT. & SUN. 9 AM



25+ TEQUILAS | FRESH MADE MARGARITAS

262.245.6666 | LuckesCantina.com
220 Elkhorn Rd. (Hwy 67), Williams Bay, WI 53191

HELLO & WELCOME ENJOY YOUR VISIT



DOWNLOAD THE BELFRY APP ALWAYS BE UP TO DATE

The FREE Belfry Music Theatre App is your key to making the most of your Belfry experience. Enjoy easy mobile ticket purchasing, season lineup, artist information and more! Receive notifications on upcoming shows, season packages, fundraisers and specials.



BelfryMusicTheatre.com | 262.394.6460
6 miles west of Lake Geneva, WI | 3601 State Hwy. 67

The Belfry Music Theatre is thrilled to provide high-quality experiences for our guests. Here are a few ways we are working to Exceed Your Entertainment Expectations.

CELL PHONES and other electronic devices can be distracting to the performers and those around you. **Please turn off your devices and refrain from using them when the lights are down.**

CHILDREN are welcome at The Belfry Music Theatre. We kindly ask that adults who bring children be considerate of those around them.

ENCORES are an exciting part of many productions. Please do not attempt to exit the theatre until the house-lights have fully illuminated.

EXITING in the case of an emergency, ushers will guide patrons to a safe location.

FIRST AID is available to patrons who need it. Please ask an usher for assistance.

LATECOMERS may have to wait to enter the theatre once a performance has begun. Please arrive 30 minutes prior to the performance to ensure you have plenty of time to get settled.

LOST & FOUND will be held in the Box Office. Please contact the Box Office 262.394.6460 to claim an item that has been lost.

RECORDING is not allowed except during announced times during the performance. Please, no photos, videos, or audio recordings when the house-lights have gone down.

SMOKING & VAPING is prohibited in all areas of the theatre and the property.

QUESTIONS? Please do not hesitate to let us know what we can do to make your experience even better! Contact the Box Office while at the theatre or call 262-394-6460 during business hours.

FOLLOW US



Facebook.com/BelfryMusic
@belfrymusic



Instagram.com/belfrymusic
@belfrymusic

W B B A

Williams Bay Business Association

OUR PURPOSE

Create a network of local business owners intent upon promoting their business and the Village of Williams Bay.

Visit the Bay.....where parking is always free!

WilliamsBayBusinessAssociation.com



BUY WITH CONFIDENCE GUARANTEE

The Belfry offers a BUY WITH CONFIDENCE GUARANTEE with all ticket sales. If for any reason you are unable to attend an event for which you purchased a ticket, simply notify The Belfry and we will gladly exchange your ticket(s) for any other event. No questions asked!

BelfryMusicTheatre.com | 262.394.6460



INDOOR ENVIRONMENTAL QUALITY

Servicing the Walworth County and surrounding areas
for over **28 years**

\$300 OFF

Installation of a 96% Efficient Furnace

AIR SYSTEMS INC. 262-728-1655

Cannot be combined with other offers
Limit one coupon per customer / Mention Belfry to receive this discount

Helping home owners Relax, Live Life and
Focus on what matters most



Airsystemshvac.com / 262-728-1655 / 4520 Highway County F North Delavan WI 53115

24 Hour Emergency Service Call: 262-728-1655

SAFETY PROCEDURES AT THE BELFRY



We Are Committed To Your Safe Entertainment Experience

The Belfry Music Theatre's 2020 Season remains as planned.
Please review the safety procedures we have instituted to ensure that
you have a safe experience.



Facemasks Required
(Will Be Available)



Hand Sanitizer Available



Temperature Checks
Before Entry



Social Distancing



Direct-to-Seat Experience



No Intermission
or Meet & Greet



Individually Wrapped
Refreshments



Livestreaming Option
Available



Highfield Farm Creamery

Southeast Wisconsin's only artisan cheesemakers

On the Quiet Side of Geneva Lake

Cheese Shop ~ Classes ~ Tours

www.HighfieldFarm.com

DOWNLOAD THE BELFRY APP ALWAYS BE UP TO DATE

The FREE Belfry Music Theatre App is your key to making the most of your experience.



BUY WITH CONFIDENCE GUARANTEE

The Belfry offers a BUY WITH CONFIDENCE GUARANTEE with all ticket sales. If for any reason you are unable to attend an event for which you purchased a ticket, simply notify The Belfry and we will gladly exchange your ticket(s) for any other event. No questions asked!



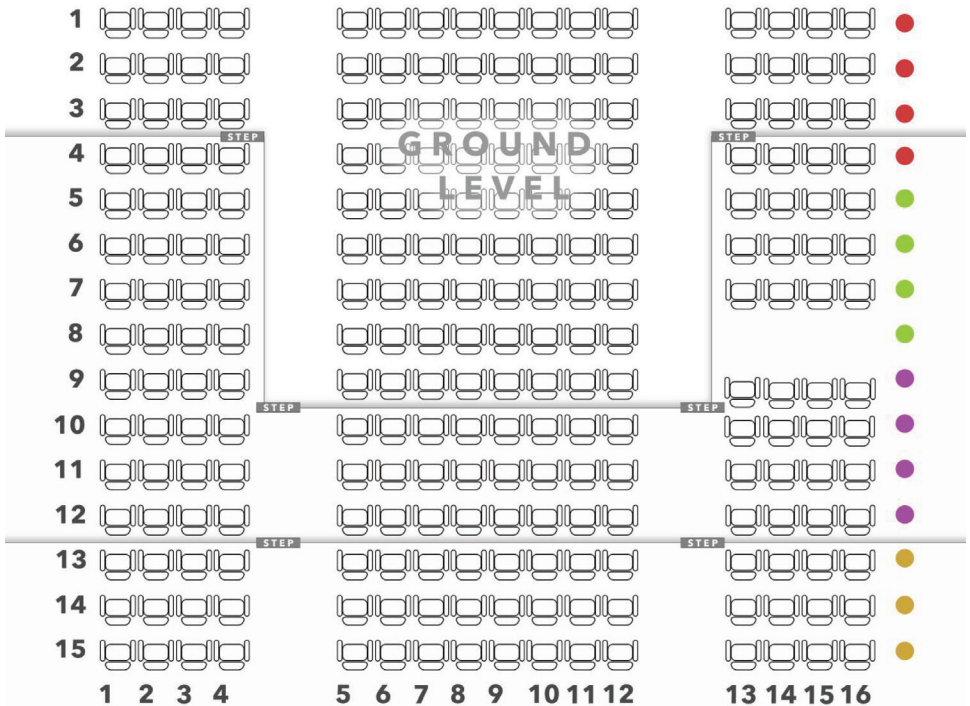
BelfryMusicTheatre.com | 262.394.6460

INSIDE OUR THEATRE

SEATING CHART



STAGE



● Premier

● Front

● Middle

● Back

2020 ENTERTAINMENT SCHEDULE

JUNE



AMERICAN ENGLISH | JUN 5-6

Beatles Tribute

Come relive the timeless music of The Beatles with American English. The #1 world renowned Beatles tribute band will take you back in time with all the sights, sounds, and memories through every era of this iconic band's history.



SAM HYMAN | JUN 10-13

Sweet Baby James - James Taylor Tribute

Sam's uncanny resemblance to James, and his astonishing capture of Taylor's vocal and guitar styles leaves audiences feeling like they've just seen and heard the legend himself.



RAINY DAY PEOPLE | JUN 17-18

Gordon Lightfoot & Jim Croce Tribute

A captivating performance of the music of legendary singer songwriters Gordon Lightfoot and Jim Croce.



DANCIN' MACHINE | JUN 19-20

70s Disco Tribute

Nowhere else can you experience the sound, power, and feel of authentic Disco played exactly the way it was by the original artists.



STRANGE MAGIC | JUN 24-25

ELO Tribute

Strange Magic is the authentic re-creation of legendary '70s rock band ELO with all of the sounds, sights, and stage effects used in a real ELO show, with live cellos and intricate vocal arrangements.

2020 ENTERTAINMENT SCHEDULE

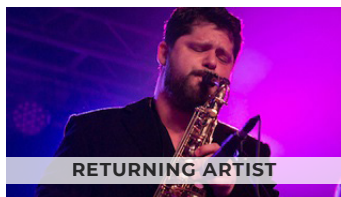
JUNE & JULY



BRITISH INVASION YEARS | JUN 26-27

60s Rock Tribute

This nostalgic musical retrospective spans the entire first wave of the British Invasion Era from both sides of the Atlantic!



CHICAGO REWIRED | JUL 1

Blood, Sweat, and Tears Tribute

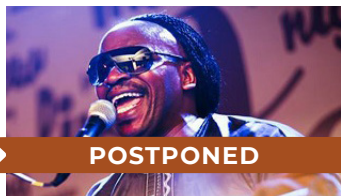
Celebrating all the greatest hits of this iconic jazz-pop-rock group of the 60s and 70s, this high energy show will have you singing along to your favorites such as Spinning Wheel and more.



CHICAGO REWIRED | JUL 2-3 & 5

A Tribute to Chicago

Chicago Rewired is the Premier Chicago Tribute Band. With every band member carefully hand-picked to replicate the longest running and most successful pop/rock groups in history.



GODFREY GAYLE | JUL 8-9

Stevie Wonder Tribute

Godfrey Gayle as Stevie Wonder is the nearest sounding vocal to Stevie himself you will ever hear! The technique, trills, and fun can all be heard as Godfrey performs Stevie's amazing hits!



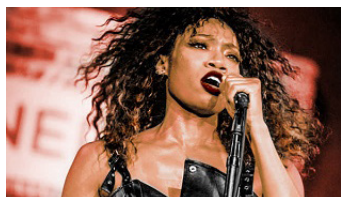
BROKEN ARROW | JUL 10-11

Neil Young Tribute

Broken Arrow performs the music of Neil Young, featuring both the rockin' electric Crazy Horse tunes and the more acoustic, pedal steel driven country rock material.

2020 ENTERTAINMENT SCHEDULE

JULY & AUGUST



SIMPLY THE BEST | JUL 15-16

Tina Turner Tribute

This high energy show is like no other! Elisa Latrice brings back the nostalgia of the Ike & Tina Revue, as well as Turner's sizzling powerhouse presence as a solo act.



RETURNING ARTIST

SOUNDS OF SUMMER | JUL 17-18

A Beach Boys Tribute

The show includes over 30 familiar hits and tells the story of America's band - the Beach Boys. These two sets of first cousins have captured the familial sound of The Beach Boys.



DOOBIE OTHERS | JUL 22-23

Doobie Brothers Tribute

Inspired by the Brothers superior song writing, the Doobie Others deliver powerful harmonies and a fun filled high energy performance covering a catalog of Doobies hits spanning both the Johnston and McDonald eras.



FEATURING ORIGINAL ARTISTS

PAUL REVERE'S RAIDERS | JUL 24-25

One of the most popular and entertaining rock groups of the 60s and 70s, the band has continued touring in memory of Paul Revere and his amazing legacy.



RETURNING ARTIST

DEAN Z | JUL 29 - AUG 2

A Tribute to Elvis

The King of Rock and Roll lives on as Dean Z takes you on an eclectic musical journey into the bygone eras of soul, rockabilly, rock 'n' roll, pop, and rhythm and blues.

2020 ENTERTAINMENT SCHEDULE

AUGUST



JAY WHITE | AUG 5-9

Neil Diamond Concert

For 25+ years Jay White has continued to stretch his singing and acting talents by paying tribute to Neil Diamond, the only Neil Diamond tribute in the world endorsed by the legend himself!



SALLY OLSON & NED MILLS | AUG 12-13

Carpenters Tribute Concert

The show features a powerful band, historical commentary, lovely arrangements and video which take audiences on an incredible journey into the world of the Carpenters.



FORTUNATE SON | AUG 14-15

A Tribute to Creedence Clearwater Revival

Combining timeless CCR favorites and Fogerty solo hits, Fortunate Son truly personifies the spirit and grit of America's Favorite Rock & Roll Band.



THE BUCKINGHAMS | AUG 19-20

An American Sunshine pop band from Chicago, Illinois featuring original founding members Carl Giammarese and Nick Fortuna continue to deliver a powerful replay of their hits and solid gold memories.



THE FOUR C NOTES | AUG 21-23

Tribute to Frankie Valli & the Four Seasons

The Four C Notes are the Midwest's only tribute dedicated to recreating the music of Frankie Valli and the Four Seasons!

2020 ENTERTAINMENT SCHEDULE

AUGUST & SEPTEMBER



ON THE BORDER | AUG 26-29

Tehe Ultimate Eagles Tribute

On The Borders passion, showmanship and precise attention to replicating the details of The Eagles Music, makes them the most authentic sounding Eagles Tribute band in the country.



TUSK | SEP 2-5

The Ultimate Fleetwood Mac Tribute

Authentic-sounding and always respectful, Tusk leaves no stone unturned in replicating the sounds of one of the world's best-loved, top-selling bands.



ZACHARY STEVENSON | SEP 6-7

Tribute to Buddy Holly

An award-winning actor, musician and writer who has been coined a "dead ringer for dead singers" by the Victoria Times Colonist for his portrayals of Buddy Holly and more!



BROADWAY: BEYOND THE CHANDELIER STARRING FRANC D'AMBROSIO | SEP 9-12

Spend an evening with the incomparable Franc D'Ambrosio as he takes you on a journey behind the curtain and revisits some of his favorite songs from the Broadway stage.



PHILIP BAUER | SEP 16-17

A Tribute to Johnny Cash

Bauer's uncanny look and stage presence take his audience back to when Cash was the king of country music. Performing all of Cash's top hits, Bauer pays tribute to the Man in Black with expertise no one else can match.

2019 ENTERTAINMENT SCHEDULE

SEPTEMBER & OCTOBER



KASHMIR | SEP 18-19

Led Zeppelin Tribute

Kashmir's primary focus is capturing the live performance and raw energy of a Led Zeppelin show creating the closest experience they will ever get to a live Led Zeppelin performance.



FOREVER MOTOWN | SEP 23-27

Motown Tribute

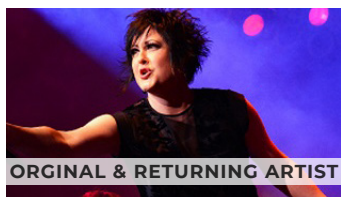
Forever Motown, direct from New York, is a full stage production of your favorite hit songs from all the Motown Legends. A sell out in every market, this show is not to be missed.



GENE SIRONEN & LARRY G JONES

Righteous Brothers Tribute | SEP 30 - OCT 1

Together, Sironen and Jones recreate the magic of The Righteous Brothers. Their portrayal of the Righteous Brothers brings back the history and memories of a wonderful era gone by.



HEART BY HEART | OCT 2-3

A Tribute to the Music of heart

Honoring the magic and power of the music of Heart. Heart by Heart considers it their responsibility to bring the songs to the stage in their original form.



CLASSIC STONES LIVE | OCT 7-10

Tribute to The Rolling Stones

Classic Stones Live performs all the staple songs of any Rolling Stones show, in original tunings where every last detail has been accounted for by this eight-piece band.

2020 ENTERTAINMENT SCHEDULE

OCTOBER



THE DEAN Z SHOW | OCT 14-18

Dean Z

"The Dean Z Show" takes you on a musical ride through the eras of soul, rockabilly, rock 'n' roll, pop, and rhythm and blues.



DOUG BREWIN | OCT 21-22

Alan Jackson Tribute

Alan Jackson impersonator Doug Brewin has all the looks and sounds of Alan himself.



INFINITE JOURNEY | OCT 23-24

Tribute to Journey

This five-piece band delivers a musically immersive Journey experience, focusing on the overall sound, solos, and most especially the soaring vocals that make Journey so iconic.



THE BOXERS | OCT 28-29

Tribute to Simon and Garfunkel

The incredible Todd and Greg Pitts of The Boxers bring back that timeless music and harmony in a fantastic performance, sure to have you on your feet all night.



KALIMBA, THE SPIRIT OF EARTH, WIND & FIRE

Tribute to Earth, Wind & Fire | OCT 30-31

The nationally touring show provides an Earth, Wind & Fire experience so satisfying it transports audiences back to the excitement of the first time they heard these unforgettable songs.

2020 ENTERTAINMENT SCHEDULE NOVEMBER



JOURNEYMAN | NOV 6-7

Eric Clapton Tribute

Journeyman - A Tribute to Eric Clapton provides a powerful performance of all aspects of Clapton's career from "Bluesbreakers" to "From The Cradle."



AMERICAN FOOL | NOV 13-14

John Mellencamp Tribute

American Fool is unmatched in their ability to accurately replicate the iconic songs of one of the greatest singer/songwriters in music history.



MIKE MASSÉ BAND | NOV 20-21

Tribute to Classic Rock

Mike Massé brings the highest level of passion and attention to detail to every song he sings, creating faithful renditions of the greatest rock music from the 70s to 90s.

BELFRY HISTORY

GLIMPSE INTO THE PAST



1888



Built in 1888 and located on the Old Geneva Road, in Walworth County. In the midst of a large corn field, it was the first Mormon church in Wisconsin.

1930s



The Belfry Players, a group of amateur actors who received no pay for their performances, were organized.

1940s



In the spring of 1940, the Belfry celebrated a new addition to the back of the original church building. Adding cement to the floor, sectioning off rooms with canvas creating dressing rooms and the Green Room.



SPOTLIGHT
TALENT

Belfry Player, **Paul Newman** played Jim O'Connor in *The Glass Menagerie* and Gov. Sam Bright in *Parlor Story*. Newman went on to success on Broadway and film.

1950s



The Crane family, famous for their family-owned plumbing fixture business that took off during the construction boom following the Great Chicago Fire of 1871 donated Crane Hall (The Belfry House).

BELFRY HISTORY

GLIMPSE INTO THE PAST



In 1962, **Gary Burghoff** gained early experience acting with the Belfry Players.

1960s



In the late 1960s, the Belfry Theatre was imperiled by a highway widening project. Although the theater building was moved and its existence saved, the company's debts forced it to suspend production between 1969 and 1976.



In 1964, **Harrison Ford** played in musicals at the Belfry as his first paid acting job at Wisconsin's first summer stock theater.

1970s



Barry E. Silverman, a director of the Dobama Theater of Cleveland, assumed proprietorship of the Belfry in 1976, dubbed his operating company "Dobama West," and revived producing for three years, closing after the 1979 season.

1990s



After regular annual productions ceased, occasional revivals and performances were booked at The Belfry into the 1990s.

2010s



In November 2013 the property was purchased and reopened the doors for summer concerts in June 2016, after nearly 20 dormant years.



HEY you... *yes* YOU!

When was the last time you
sacrificed time or money
for your creative soul?

Volunteering is a great way to
get involved in the arts locally.
You will have fun with our
energetic and friendly team.
Experience making invaluable
friendships with other
individuals of the community.

To give inspiration and delight to thousands,
please stop by the box office during a show and
inquire about our volunteer opportunities.



BUY WITH CONFIDENCE GUARANTEE

The Belfry offers a BUY WITH CONFIDENCE GUARANTEE with all ticket sales. If for any reason you are unable to attend an event for which you purchased a ticket, simply notify The Belfry and we will gladly exchange your ticket(s) for any other event. No questions asked!

BelfryMusicTheatre.com | 262.394.6460

APPRECIATION

RECOGNIZING OUR VOLUNTEERS



The Belfry Music Theatre is blessed with many selfless members of the community who generously contribute their time and talents to ensure that all patrons have an experience which exceeds all expectations!

GOLD PLUS LEVEL | 150 + Hours in 2019

| | | |
|------------------------|-------------|----------------|
| Sally Roth | Kay Higgins | Dick Heuvelman |
| "Dancing" John Munizzi | | |

GOLD LEVEL | 100 + Hours in 2019

| | | |
|------------------|--------------------|------------------|
| Bobbie Consolino | Nancy La Cursia | Bernadine Peletz |
| Judy Hardt | Debbie Mc Goldrick | Russ Sabac |

SILVER LEVEL | 40 + Hours in 2019

| | | |
|----------------|------------------------|--------------------|
| Clair Aspenson | Sue Hurkman | Becky Oehmen |
| Laura Berg | Helen Hawkinson | Barb Obligato |
| Denise Cardosi | Todd Hardt | Chip Renfro |
| Mike Brumfield | Pete & Pat Heintzelman | Debbie Stacey |
| Ken Field | Gene & Kate Ingersoll | Fred Schnitcke |
| Carole Forbes | Ken & Ruth Monico | Bacon Schnitcke |
| Eric Gefvert | Nancy Mierkiewicz | Jim Thometz |
| Bob Hoffman | Don Mason | Bob & Jacqui White |

BRONZE LEVEL | 10 + Hours in 2019

| | | |
|------------------------|--------------------|---------------------|
| Pat & Sam Grosso | Joe & Gayle Morici | Karen Raatz |
| John Hawkinson | Sheila Mason | Dela Race |
| Jayne Hoffman | Pete Oehmen | Kathi Swangren |
| Sandi Lewis | Constance Neven | Jack Schultz |
| Joe Libert | Mary Peterson | M. Catthy Thometz |
| Mike Lyon | Mary Ellen Phelan | Elayne Tiritilli |
| Bonnie & Lauren Martin | Rita Pilarski | Patty Tymcio |
| Bob & Sarah Jane Moore | Barb Renfro | John & Sue Williams |



35 YEARS OF EXPERIENCE AND A LIFETIME ON THE LAKE

AWARD WINNING TEAM

PHILIPPS AND SHIELDS REAL ESTATE TEAM

The Philipps & Shields award-winning Real Estate Team has over 35 years of experience in Southeastern Wisconsin and sold multi-million dollars in real Estate, helping many families move last year.

FOR SUCCESSFUL RESULTS, CONTACT:

BARBARA PHILIPPS

262.215.9806

bphilipps@keeferealestate.com

CHRIS SHIELDS

262.581.3689

cshields@keeferealestate.com

THANK YOU AWARDS & RECOGNITIONS



Thank you to all our patrons for choosing to attend performances at The Belfry Music Theatre. The Belfry desires to continue its legacy to engage, inspire and entertain our community by presenting professional productions for the entire family that enrich and have a meaningful impact in their lives to build memories throughout the generations. All of which would not be possible without you - Thank You!



Based upon our patrons' reviews we are humbled to announce the Belfry Music Theatre has been awarded the TripAdvisor Certificate of Excellence for in 2017, 2018 and 2019!



The Belfry Music Theatre was recognized as the 2017, 2018 and 2019 Best of Walworth County Winner - Event. Thank you to our patrons' who took the time to vote for The Belfry.



HOW WAS YOUR VISIT?

We'd like to know!

Review us on TripAdvisor!

Just visit [tripadvisor.com/reviewit](https://www.tripadvisor.com/reviewit) and look for:

BELFRY MUSIC THEATRE

Delavan, Wisconsin

Thank you. We hope to see you again soon!





BUILDING
DEVELOPMENT
DESIGN

262/248-9210

WWW.ENGERMANCONTRACTING.COM

A photograph of a rustic table setting. The table is covered with a black and white chevron patterned cloth. On the table are several small glass vases with yellow sunflowers, lit candles in glass holders, and a framed picture of a landscape. The background is a dark wood wall with string lights. The text 'TABLE CHIC Design' is overlaid in a white serif font, with 'Design' in a script font. Below the text, the contact information is provided.

TABLE CHIC
Design

designing tablescapes for your special event

262.745.0827 | tablechicdesigns@gmail.com

2020 BELFRY MEMBERSHIP PART OF THE COMMUNITY



Since our first season in 1932, generous patrons have embraced the Belfry Music Theatre as part of our community. Your support ensures that ticket prices remain affordable to those who might not otherwise experience the theater.

2020 Membership proceeds support the Lobby and Concessions renovations. In appreciation of your support of The Belfry Music Theatre we will waive ALL of your ticket processing fees for the entire 2020 show season, saving you \$3.00 for each ticket purchased. You will also receive advance ticket purchasing ability before sales open to the general public.

All Membership proceeds go toward our Renovation Fund!

Sign-up online at BelfryMusicTheatre.com/support/memberships

2020 VIP+ Membership \$499

- VIP Advance Ticket and Lodging Purchasing
- Seating Upgrades
- VIP Member Concierge Services
- Invitation to VIP Members' Annual Dinner
- Ticket Processing Fees Waived
- Complimentary Overnight at The Belfry House

2020 VIP Membership \$249

- VIP Advance Ticket and Lodging Purchasing
- Seating Upgrades
- VIP Member Concierge Services
- VIP Members' Annual Dinner
- Ticket Processing Fees Waived

2020 Membership \$99

- Advance Ticket Purchasing
- Seating Upgrades
- Ticket Processing Fees Waived

GENEVA LAKE COLLECTION

EXCLUSIVELY AT FONTANA JEWELER



553 VALLEY VIEW DRIVE
FONTANA, WI 53125
262-275-6363
WWW.FONTANADIAMONDS.COM
MONDAY - SATURDAY 9 - 5



FONTANA JEWELER



**LAKE GENEVA
BLIND CO**

**CUSTOM WINDOW
TREATMENTS
PLANTATION SHUTTERS
SHADES & BLINDS
MOTORIZATION
UPHOLSTERY**

SCOT GRUNOW
262.903.9282

KIRSTEN LARSEN
262.203.1966

WWW.LAKEGENEVABLINDS.COM

Daniels Foods

Est. 1922 Sentry

Onsite Butcher - USDA Choice Meats
Sushi Bar
Fresh Baked Bakery Daily
Custom Made Cakes
Now Featuring Lovin Oven Cakery
On-Site Floral Designers
Pump Perks Gas Program
Custom Fruit & Veggie Bouquets
Fresh Salad Bar
In-Store Deli & Cafe
Boars Head Meat & Cheeses
Gluten-Free Section
Online Grocery Ordering & Pick Up
Photo Kiosk

Open daily **6 a.m.-11 p.m.**

Full service gas at Sentry Express
Every Sunday 9:00 a.m. - 4:00 p.m.

681 Kenosha St., Walworth

262.275.0458

danielsfoods.com



At Mercyhealth, passion drives everything we do to deliver medical excellence with a compassionate touch to everyone who walks through our doors. Passion inspires our doctors, nurses, technicians and support staff to do whatever it takes to make you feel better and keep you well. Nothing is ever too small or taken for granted. **Everything matters. Every little thing.**

Mercyhealth Hospital and Medical Center-Walworth*

Hwys. 50 and 67
Lake Geneva
(262) 245-2230



Mercyhealth®

A passion for
making lives better.

*Reserve your spot at our Emergency and Urgent Care departments by visiting mercyinquicker.org.



**DePIETRO DESIGN
ASSOCIATES INC.**

ARCHITECTS

ARCHITECTURE / ENGINEERING / DESIGN
CUSTOM RESIDENTIAL · COMMERCIAL · INDUSTRIAL · RENOVATIONS

Designing Quality Custom Homes for Over 30 years!

RUSSELL J. DEPIETRO, *Architect*
russ@depietrodesign.com
Licensed in Wisconsin & Illinois

262.728.9300

www.depietrodesign.com





BUILDING
DEVELOPMENT
DESIGN

262/248-9210

WWW.ENGERMANCONTRACTING.COM

A photograph of a rustic table setting. The table is covered with a black and white chevron patterned cloth. On the table are several small glass vases with yellow sunflowers, lit candles in glass holders, and a framed picture of a landscape. The background is a dark wood wall with string lights. The text 'TABLE CHIC Design' is overlaid in a white serif font, with 'Design' in a script font. Below the table setting, the text 'designing tablescapes for your special event' is written in a script font, followed by the phone number '262.745.0827' and the email address 'tablechicdesigns@gmail.com'.

THE BELFRY MUSIC THEATRE FOUNDATION

The Belfry Music Foundation was created with one mission in mind, to Bring Back The Belfry. Stay informed of the exciting progress being made as we renovate and preserve the property by visiting our website www.BelfryFoundation.org.

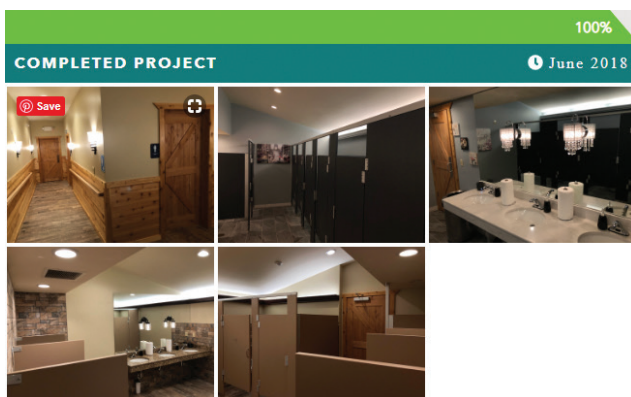
— RENOVATION PLANS —

Here is snapshot of the renovations. View all the renovations plans, video updates and pre-construction photos on our website www.BelfryFoundation.org.

RESTROOM ADDITION

Progress:

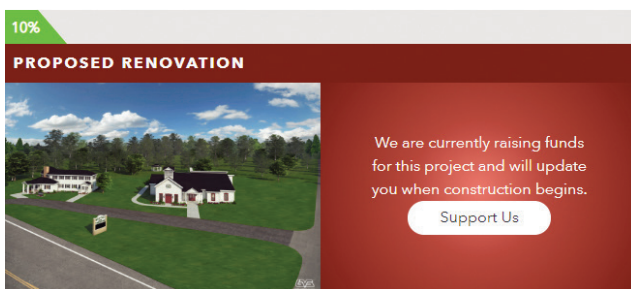
- ✓ Men's Restroom
- ✓ Women's Restroom
- ✓ Mechanical Room
- ✓ Storage Facilities



EXTERIOR TOUCH-UPS

Progress:

- New Energy Efficient Windows
- New Siding
- Sidewalk Enhancements
- Landscaping Enhancements



2020 BELFRY PRESERVATION FUND

What is The Preservation Fund? Due to Covid-19, The Belfry Music Theatre is facing a significantly challenging year in 2020 along with all other parties involved in the live entertainment industry.

We are truly humbled by the number of patrons who have recently contacted us and expressed their desire to donate to The Belfry Music Theatre Foundation. Patrons have requested instructions on how to share their financial resources so the Belfry Music Theatre remains a viable and integral part of the community during this unprecedented year.

"Thank you" will never be enough to express our appreciation for your generosity. With your financial support, we will continue to work diligently all year to provide the highest level of professional live entertainment and bring the joy of music to each person in attendance.

— WHY SHOULD I DONATE? —

Support The Belfry Music Theatre's mission to provide live entertainment to the Lake Geneva area for generations to come. Aid The Belfry Music Theatre through the challenging financial stress that the COVID-19 virus has inevitably caused.

Your contribution to The Belfry Music Theatre Foundation
(a 501(c)3 Organization) is 100% tax deductible.



THANK YOU FOR YOUR SUPPORT

PHOTOGRAPHY

IDEAL IMPRESSIONS

COMPANY



WEDDINGS - EVENTS - PHOTOBOOTHS - VIDEO

ideallimpressions.com
262.729.3192